

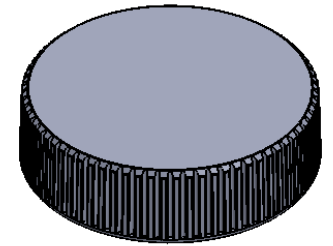
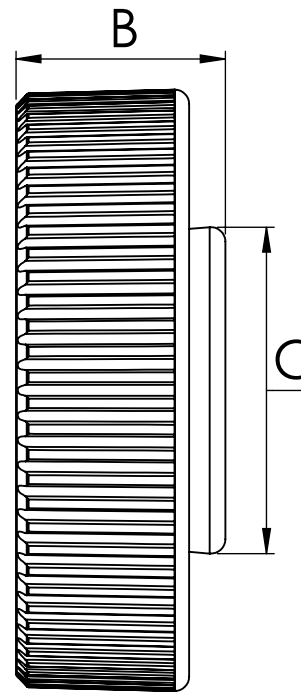
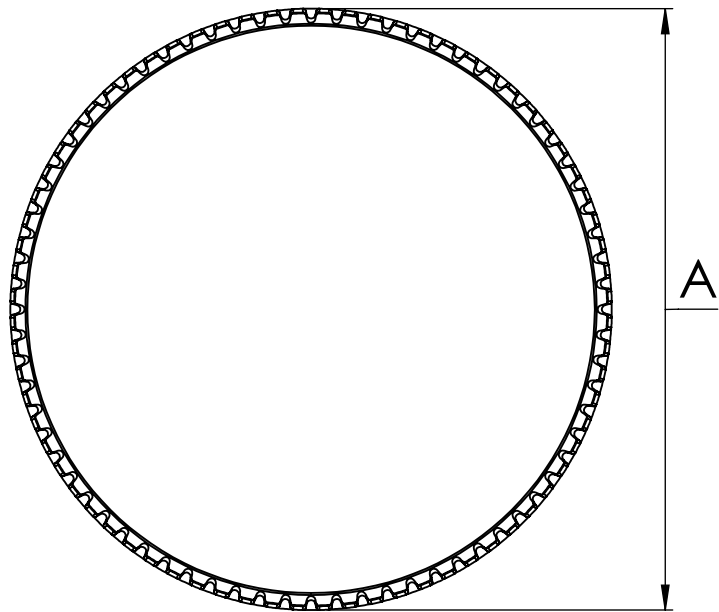
Dimensions (In Inches)

Fits Screw	A	B	C
#4	5/16"	11/64"	9/32"
#6	3/8"	3/16"	21/64"
#8	1/2"	7/32"	3/8"
#10	5/8"	1/4"	27/64"
1/4"	3/4"	5/16"	1/2"

Shear-Loc Products  
 23191 Peralta Dr.  
 Laguna Hills, CA 92653  
 PHONE: 949-768-8985  
 FAX: 949-768-8705  
 Email: sales@shear-loc.com  
<https://www.shear-loc.com>  
 ©2020 Shear-Loc Products®

	NAME	DATE
DRAWN	A.Kovacs	
CHECKED		
COMMENTS:		
<b>PROPRIETARY AND CONFIDENTIAL</b>		
<small>THE INFORMATION CONTAINED IN THIS DRAWING IS THE SOLE PROPERTY OF SHEAR-LOC PRODUCTS. ANY REPRODUCTION IN PART OR AS A WHOLE WITHOUT THE WRITTEN PERMISSION OF SHEAR-LOC PRODUCTS IS PROHIBITED.</small>		

<b>shear-Loc</b> PRODUCTS <i>Since 1969</i>		
TITLE: <b>Standard Knurled Inch Knobs</b>		
SIZE <b>A</b>	DWG. NO. <b>899-903</b>	REV
SCALE: NONE	WEIGHT:	SHEET 1 OF 1



Dimensions (In Inches)

Fits Screw	A	B	C
1/4"	1"	5/16"	1/2"
5/16"	1"	13/32"	19/32"

Shear-Loc Products

23191 Peralta Dr.  
Laguna Hills, CA 92653

PHONE: 949-768-8985

FAX: 949-768-8705

Email: sales@shear-loc.com

<https://www.shear-loc.com>

©2020 Shear-Loc Products®

	NAME	DATE
DRAWN	A.Kovacs	
CHECKED		
COMMENTS:		

**PROPRIETARY AND CONFIDENTIAL**  
THE INFORMATION CONTAINED IN THIS DRAWING IS THE SOLE PROPERTY OF SHEAR-LOC PRODUCTS. ANY REPRODUCTION IN PART OR AS A WHOLE WITHOUT THE WRITTEN PERMISSION OF SHEAR-LOC PRODUCTS IS PROHIBITED.

**shear-loc**  
PRODUCTS *Since 1969*

TITLE:  
**1" Standard Knurled  
Inch Knob**

SIZE	DWG. NO.	REV
<b>A</b>	<b>904 &amp; 906</b>	
SCALE: NONE	WEIGHT:	SHEET 1 OF 1