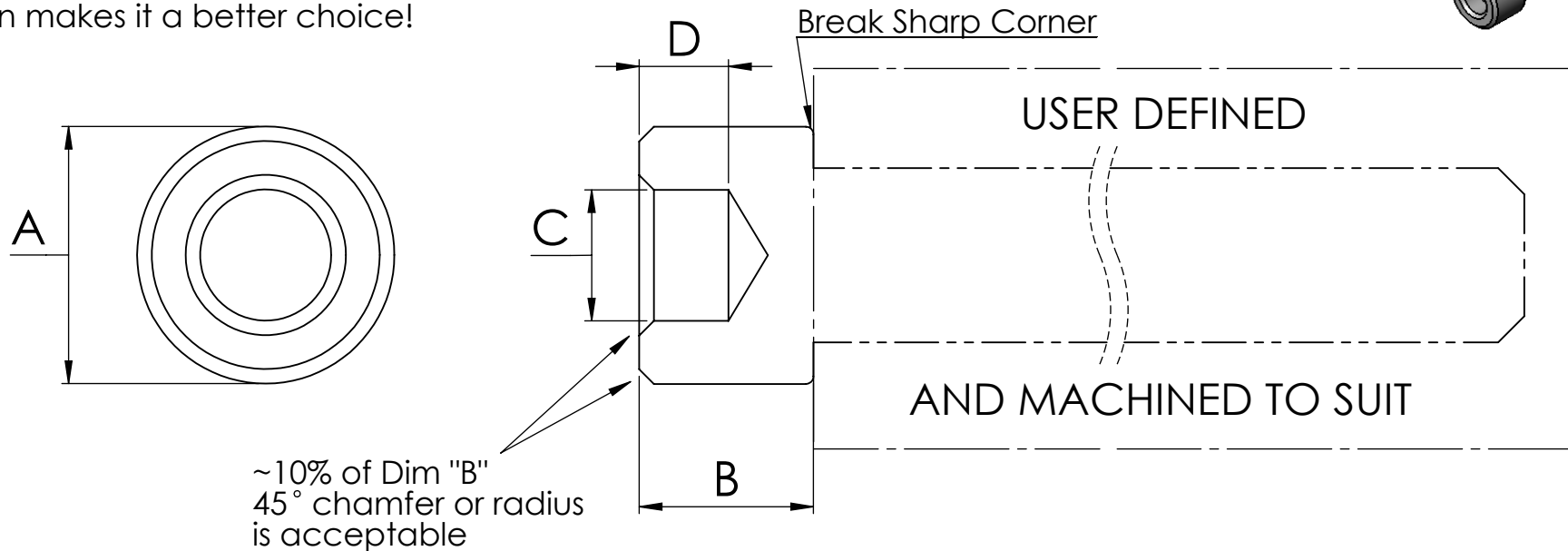
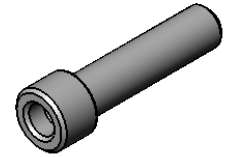


Why The Metric Series?

The retaining socket diameter is greater and its internal design makes it a better choice!



Click on the knob size to go to a printable PDF showing the available Shear-Loc Knobs that will fit on the corresponding head.

The information on this drawing is intended to aid in the manufacture of a custom stud that will cold-form onto a standard Shear-Loc Knob. Shear-Loc Products does not offer custom machining. Therefore, it is the responsibility of the producer to fully test the functionality and reliability of the finished product.

Dimensions (In Inches)					Shear-Loc Products 23191 Peralta Dr. Laguna Hills, CA 92653 PHONE: 949-768-8985 FAX: 949-768-8705 Email: sales@shear-loc.com https://www.shear-loc.com ©2020 Shear-Loc Products®	NAME	DATE						
KNOB SIZE	A	B	C (DRILL)	D		DRAWN	A.Kovacs		TITLE:				
M3	.213	.115	#38(.1015)	.078		CHECKED			Head Dimensions for Cold Forming Custom Studs to Shear-Loc Knobs				
M4	.271	.155	1/8(.125)	.098		COMMENTS:			SIZE DWG. NO. REV				
M5	.330	.195	#20(.161)	.122		PROPRIETARY AND CONFIDENTIAL THE INFORMATION CONTAINED IN THIS DRAWING IS THE SOLE PROPERTY OF SHEAR-LOC PRODUCTS. ANY REPRODUCTION IN PART OR AS A WHOLE WITHOUT THE WRITTEN PERMISSION OF SHEAR-LOC PRODUCTS IS PROHIBITED.			A S-L USER CUSTOM				
M6	.388	.233	#4(.209)	.147	SCALE: NONE WEIGHT:				SHEET 1 OF 1				
M8	.506	.312	1/4(.250)	.189									
M10	.623	.390	R(.339)	.236									